



but is this the  
right place for it?

We put everything in the right place:  
properly separated waste can become a great resource.

---

Separate waste properly  
is important because it can  
**be recycled and transformed**  
**into other products**, by  
limiting the use of raw  
materials.



---

# how can we improve?

With everyone's commitment, we can **guarantee a better future** for our children by respecting the environment and avoiding wasting precious resources.

We trust in your collaboration to further improve the quality of recycling for the Municipality of Verdellino.

**The following pages offer all the information you need on high-quality waste separation!**



---

# ORGANIC

---

## ORGANIC WASTE GOES INTO MATER-BI BAGS INSIDE THE SPECIAL GREEN CONTAINERS

### WHAT TO DISPOSE OF:

raw or cooked kitchen waste and scraps, skins and scraps of vegetables and fruit, scraps of meat and fish, bones and fishbones, pasta and flour-based products, bread, rice, fruit kernels, seeds, cut flowers, remains and the leaves of house plants, shells (eggs, walnuts, hazelnuts), tea and chamomile bags, coffee grounds, cork, ash (from the fireplace and barbecue), napkins and used paper tissues or dirty with food residues.

### WHAT NOT TO DISPOSE OF:

grass cuttings and prunings, gardening waste (grass, leaves, remains from pruning plants), animal droppings, paper for food packaging (greaseproof, plasticized or with aluminium), cigarette butts, liquids, oil, chemicals, rags, wood.



Emptying  
**weekly**  
from October to May  
**twice weekly**  
from June to September



---

# PLASTICS

---



Collection  
fortnightly



## PLASTIC GOES INTO TRANSPARENT YELLOW BAGS

### WHAT TO DISPOSE OF:

mineral water, milk, soft drinks and oil bottles, containers and dispensers for detergents, soaps and cosmetics, sauce, cream, yoghurt and ice cream containers, food tubs (in PET, polystyrene and polypropylene), blister packs and shaped packaging, bags for pasta, crisps, sweets, vegetables and frozen foods (even those silvered internally), net bags for fruit and vegetables, transparent film wrap, store bags, bags for gardening products, detergents and animal food, clothes hangers,

flower and plant pots used for sale and transport, material for the protection and transport of goods (films, bubble wrap, polystyrene chips), disposable plates and tumblers (free from food leftovers).

### WHAT NOT TO DISPOSE OF:

toys, trainer shoes, plastic sandals, mats, plastic furnishings and artefacts, DVDs, CDs, music and video cassettes, photographs and photographic film, pens, umbrellas, disposable razors, jerry cans, buckets.

*REMEMBER: to empty, rinse and/or clean and then flatten the containers.*

---

# GLASS AND METAL

---

## GLASS AND CANS GO INTO THE APARTMENT BLOCK BIN OR OTHER CLOSED AND REUSABLE CONTAINERS

### WHAT TO DISPOSE OF:

bottles, glasses, jars, vases and glass jugs, trays and storage containers for frozen food, tins and tubes for food, beverage cans and for liquids, aluminium sheets, cans, metal hangers, metal caps, spray cans not tagged with hazard symbols, coffee makers.

### WHAT NOT TO DISPOSE OF:

ceramic plates and cups, incandescent and low consumption lamps, neon tubes, mirrors, containers made of pyroceram (pyrex type) or ceramic, glasses and crystal glass objects, plastic bags, spray cans tagged with hazard symbols



Emptying  
fortnightly



*REMEMBER: to empty, rinse and/or clean and then flatten the containers.*

---

# PAPER

---



Emptying  
fortnightly

## PAPER IS LEFT OUT IN BOUND PARCELS OR IN CARDBOARD BOXES OR OTHER CONTAINERS

### WHAT TO DISPOSE OF:

newspapers, notebooks and magazines (without adhesive, metal or plastic parts), containers in Tetra Pak (milk, fruit juices and other beverages), paper bags, trays and cardboard boxes for food carton packages for toys and clothing, pizza box without leftover food.

### WHAT NOT TO DISPOSE OF:

dirty paper with food residue, fax paper or non-carbon copy paper, receipts, greaseproof paper, plastic-coated public transport tickets, cellophane wrappings, pizza cartons with residual food attached, plastic bags.

---

# UNSORTED WASTE

---

## UNSORTED WASTE MUST GO INTO TRANSPARENT BAGS

All waste that cannot be recycled should be put into transparent bags.

### WHAT TO DISPOSE OF:

dirty greaseproof paper and sandpaper, broken dishes and ceramics in general (limited quantity), small plastic toys not electronic and without batteries, CD, DVD, music cassettes and video cassettes, filters and bags for vacuum cleaners, plasters, disposable razors, cigarette butts.

### WHAT NOT TO DISPOSE OF:

batteries, oils, medicinal products, hazardous containers and materials (glues, paints, solvents, insecticides), low consumption and neon lamps.



Collection  
weekly



Sanitary towels, nappies and incontinence pads should be put in the transparent bag separate from the unsorted waste bag.



---

# ...and everything else?

There's a place for any type of waste, even for granny's old sofa or the TV remote batteries.



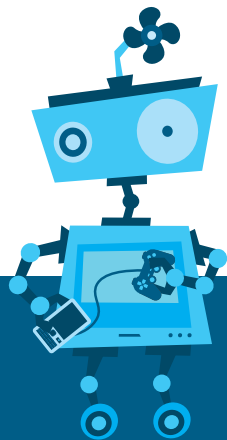
# COLLECTION CENTRE in Corso Italia

You can bring all reusable waste and those considered to be dangerous to the Collection Centre, recycling is compulsory for:

- material in glass (bottles, jars, etc.)
- plastic containers for liquids (bottles etc.)
- wood and wooden crates
- used batteries
- exhausted lead accumulators (car batteries)
- animal and vegetable oils and fats cooking leftovers
- bulky waste (furniture and the like)
- polystyrene
- beverage cans in aluminium
- metal materials and tins (cans,

maize, peas , oil, etc.)

- paper from offices, newspapers, books, magazines, cardboard,
- vegetable waste from gardening
- wooden waste natural cellulosic
- containers tagged with hazard symbols
- used toner cartridges
- medicinal products that are unused or expired
- WEEE\* (appliances, telephones, computers, chargers)
- bulbs and neon, discharge lamps, cathode-ray tubes
- inert materials (brick, rubble, etc.) of domestic origin
- hard plastics (boxes, cans, chairs and garden tables).



## \* WEEE

These are all household appliances and technological products of every type and size, that need an electric plug cells or batteries to work.

For example: refrigerators, washing machines, televisions, computers, monitors, mobile phones, cameras, video games, MP3 players, irons, blow dryers, blenders, vacuum cleaners, etc.

**WARNING:** if they are not disposed of properly, WEEE is a source of serious pollution in the air, water and soil.

## OPENING HOURS

Tuesday, Wednesday, Friday	9 - 12 and 15 - 18
Thursday	15 - 18
Saturday	9 - 12 and 14 - 17
Sunday	9 - 12



Access to the Collection Centre is only allowed to residents in Verdellino that have the Regional Services card. Business users can enter with the appropriate badge issued by the Municipality.

\*\* On containers of hazardous waste you will see these symbols:



### TOXIC

fly killers, acids, thermometers, bactericides, enamel paints, freezing products, rat poison, weed killers, insecticides, caustic soda, disinfectants.



### IRRITANT

bleach, ammonia, trichlorethylene, nitro and synthetic paints, turpentine, car cleaners, stain removers, glues, varnishes for bodywork, mastics, thinners, adhesives.



### INFLAMMABLE

aerosol sprays, stain removers, solvents, zinc-based anti-rust, glue, enamel paint, nitro-synthetic enamel paints, anti-mist agents, thinners, gloss paint for furniture, ethyl alcohol for liquors, car polish.



### CORROSIVE

batteries, acids, products for unblocking pipes.

Clothes and clothing in general, if still in good condition and clean, can be taken to the container inside the Collection Centre. These containers are managed by a non-profit organization that empties them weekly and sends their contents for reuse.

## USED CLOTHES



---

## BULKY WASTE

Bulky waste such as furniture, mattresses, large domestic appliances, furnishing objects can be brought to the Collection Centre in Corso Italia. Alternatively you can request home collection upon payment.



### Per prenotare:

- call the freephone number **800 392233** from Monday to Friday from 8 to 17 and Saturday from 8 to 12.

---

## BATTERIES AND DRUGS

Exhausted batteries are thrown away into the appropriate bins distributed throughout the municipality. Expired drugs should be thrown away in the **appropriate bins** to be found in chemists shops. Alternatively, batteries and drugs, can be brought to the Collection Centre.



---

# Where to Put it?



<b>A</b> Abrasive tape	● Unsorted waste
Absorbent cotton	● Unsorted waste
Acetate paper	● Unsorted waste
Acetone	Collection Centre
Acrylic materials/insulators in small quantities from houseworks	Collection Centre
Adhesive labels	● Unsorted waste
Adhesive tape	● Unsorted waste
Aerosol spray cream	● Glass and cans
Air conditioners	Collection Centre
All types of raw or cooked food waste	● Organic
Aluminium (sheets)	● Glass and cans
Aluminium bags	● Glass and cans
Aluminium beverage cans	● Glass and cans
Aluminium cans	● Glass and cans
Aluminium containers	● Glass and cans
Aluminium for food	● Glass and cans
Aluminium frames	Collection Centre
Aluminium percolator	● Glass and cans
Aluminium sheets	● Glass and cans
Aluminium tins	● Glass and cans
Aluminium trays	● Glass and cans
Aluminium window frames	Collection Centre
Animal droppings	● Unsorted waste
Antennas	Collection Centre
Antennas audio/video	Collection Centre
Anti-rust	Collection Centre
Aquarium	Collection Centre
Armchair (various sizes)	Collection Centre
Ash	● Unsorted waste
Audio cassettes and their cases	● Unsorted waste
Aviary	Collection Centre
<b>B</b> Baby highchair	Collection Centre
Baby bottle	● Unsorted waste
Baby tricycle	Collection Centre
Baby walker	Collection Centre
Backpacks if in good condition	Container in the Collection Centre
Bactericides	Collection Centre
Bags if in good condition	Container in the Collection Centre
Baking paper	● Unsorted waste
Balloons	● Unsorted waste
Ballpoint pens	● Unsorted waste

Barbecue	Collection Centre
Basins and other hard plastic objects (small sizes)	● Unsorted waste
Bath tubs	Collection Centre
Bathfoam (plastic container)	● Plastic packaging
Batteries	Containers in chemists shops/ Collection Centre
Battery chargers	Collection Centre
Beach umbrella	Collection Centre
Bed head	Collection Centre
Bed linen if in good condition	Container in the Collection Centre
Bed Rail	Collection Centre
Bedframe	Collection Centre
Bedside cabinet	Collection Centre
Bedsprings (various sizes)	Collection Centre
Belts if in good condition	Container in the Collection Centre
Bench (various sizes)	Collection Centre
Bicycle rack	Collection Centre
Bicycles	Collection Centre
Bidet	Collection Centre
Binder	Collection Centre
Birdcage	Collection Centre
Biro	● Unsorted waste
Biscuit paper	○ Paper and cardboard
Blankets if in good condition	Container in the Collection Centre
Blender	Collection Centre
Blister packs for tablets	● Plastic packaging
Blister packs for tablets plastic/ plastic prevalence	● Plastic packaging
Blower	Collection Centre
Boiler	Collection Centre
Bones (in small quantities)	● Organic
Books	○ Paper and cardboard
Bookshelves various lengths	Collection Centre
Bottle caps	● Glass and cans
Bottling machine	Collection Centre
Boxes for detergents	○ Paper and cardboard
Broken glass	● Glass and cans
Broken shoes	● Unsorted waste
Broom	Collection Centre
Bubble wrap	● Plastic packaging
Building rubble in small quantities	Collection Centre
Bulbs	Collection Centre

C Buttons	● Unsorted waste
Cabinet doors in iron	Collection Centre
Calculators	Collection Centre
Calendars (remove the non-paper parts)	○ Paper and cardboard
Camera	Collection Centre
Camping type Stove	Collection Centre
Cans and tins for beverages and oil	● Glass and cans
Cans for paints	Collection Centre
Cans of beer	● Glass and cans
Cans of tuna	● Glass and cans
Car Batteries	Collection Centre
Car bicycle rack	Collection Centre
Carbon paper	● Unsorted waste
Card and carton packages	○ Paper and cardboard
Cardboard boxes	○ Paper and cardboard
Cardboard boxes for food	○ Paper and cardboard
Cardboard boxes for fruit	○ Paper and cardboard
Cardboard container for salt/sugar	○ Paper and cardboard
Carpet	Collection Centre
Carpet beater	Collection Centre
Carrier for animals	Collection Centre
Cartons for drinks (tetrapak)	○ Paper and cardboard
Cassette tape	● Unsorted waste
Cat litter	● Unsorted waste
CD player	Collection Centre
CDs and their cases	● Unsorted waste
Ceiling fan blade	Collection Centre
Ceiling lights	Collection Centre
Cellophane films	● Plastic packaging
Cellular phones	Collection Centre
Ceramic cups	Collection Centre
Ceramic plates	Collection Centre
Ceramics	Collection Centre
Chains	Collection Centre
Changing table	Collection Centre
Chemical adhesives	Collection Centre
Chemical paper faxes or self copying	● Unsorted waste
Chest of drawers	Collection Centre
Chests	Collection Centre
Chewing gum	● Unsorted waste



Chipboard (large quantities)	Collection Centre
Chipboard (small quantities)	● Organic
Christmas Tree (plant)	Collection Centre
Christmas Tree (synthetic)	Collection Centre
Cigarette and cigar butts	● Unsorted waste
Cigarette butts	● Unsorted waste
Cigarette packet (excluding internal tissue paper)	○ Paper and cardboard
Clean bread bags	○ Paper and cardboard
Clean paper napkins	○ Paper and cardboard
Clean pizza cartons	○ Paper and cardboard
Clean sawdust	● Organic
Clean wet paper	○ Paper and cardboard
Clipboards in plastic for documents	● Unsorted waste
Clocks	● Unsorted waste
Closets in iron	Collection Centre
Cloth and leather bags if in good condition	Container in the Collection Centre
Clothes hangers in metal and wood	● Unsorted waste
Clothes if in good condition	Container in the Collection Centre
Clothes rack	Collection Centre
Clothes stand	Collection Centre
Clothing if in good condition	Container in the Collection Centre
Coffee	● Organic
Coffee bag	● Plastic packaging
Coffee grounds	● Organic
Coffee machine	Collection Centre
Cold ashes from the fireplace	● Organic
Colours (markers, crayons)	● Unsorted waste
Combs and brushes	● Unsorted waste
Complete PC	Collection Centre
Composite packaging (tetrapak)	○ Paper and cardboard
Compostable coffee pods	● Organic
Computer case with tower	Collection Centre
Condoms	● Unsorted waste
Containers in Tetra Pak	○ Paper and cardboard
Containers made of pyroceram (pyrex type)	Collection Centre
Containers of liquid products for cleaning the house	● Plastic packaging
Cooking oil tins	● Glass and cans
Cooler bags	● Unsorted waste

Corks	● Organic
Corkscrew	● Unsorted waste
Correction fluid with hazard symbols	Collection Centre
Corrugated cardboard	○ Paper and cardboard
Cosmetic samples	● Unsorted waste
Cosmetic	● Unsorted waste
Cotton swab	● Unsorted waste
Cradle	Collection Centre
Credit cards	● Unsorted waste
Crisp bags	● Plastic packaging
Crystal carafes	Collection Centre
Crystal glasses	Collection Centre
Crystalware	Collection Centre
Curtain pole	Collection Centre
Cushions	Collection Centre
Cycle Computer	Collection Centre
Deck chair	Collection Centre
Decoder	Collection Centre
Demijohn	Collection Centre
Desk (various sizes)	Collection Centre
Diluents	Collection Centre
Dirty pizza cartons	● Organic
Dishwasher	Collection Centre
Disinfectants	Collection Centre
Disposable plastic cups	● Plastic packaging
Disposable plastic plates (without residues)	● Plastic packaging
Disposable razors	● Unsorted waste
Dog food	● Organic
Dog kennel	Collection Centre
Door mat	Collection Centre
Dresser	Collection Centre
Dressing residues	● Unsorted waste
Drill	Collection Centre
Dry dog food	● Organic
Dry leaves from the garden	Collection Centre
Dryer	Collection Centre
Dust from the vacuum cleaner	● Unsorted waste
Duvets if in good condition	Container in the Collection Centre
DVD player	Collection Centre
DVDs and their cases	● Unsorted waste

D

E	Earthenware vases	Collection Centre
	Ecological correction fluid	● Unsorted waste
	Edible Fats	● Organic
	Egg shells	● Organic
	Elastics	● Unsorted waste
	Electric broom	Collection Centre
	Electric cables	Collection Centre
	Electric coffee grinder	Collection Centre
	Electric flashlights	Collection Centre
	Electric grill	Collection Centre
	Electric Guitar	Collection Centre
	Electric hair trimmer	Collection Centre
	Electric heater	Collection Centre
	Electric juicer	Collection Centre
	Electric knife	Collection Centre
	Electric lawn mower	Collection Centre
	Electric ovens	Collection Centre
	Electric pepper mill	Collection Centre
	Electric power supplies	Collection Centre
	Electric radiator	Collection Centre
	Electric razors	Collection Centre
	Electric toothbrush	Collection Centre
	Electric trimmer	Collection Centre
	Electronic equipment (small size)	Collection Centre
	Electronic games	Collection Centre
	Electronic personal weighing scales	Collection Centre
	Electronic scale	Collection Centre
	Electrostimulator	Collection Centre
	Exercise bench	Collection Centre
	Exercise bike	Collection Centre
	Expired drugs (only blisters or bottles)	Containers in chemists shops/ Collection Centre
	Expired medication (only blisters or bottles)	Containers in chemists shops/ Collection Centre
	External plastic bottle packaging	● Plastic packaging
Eyeglasses	● Unsorted waste	
F	Fabric and tapes	● Unsorted waste
	Fabric gloves	● Unsorted waste
	Fake flowers	● Unsorted waste
	Fan	Collection Centre

FAX (electronic equipment)	Collection Centre
Felt tabs	● Unsorted waste
Figurines	● Unsorted waste
Fishing rods	Collection Centre
Floor lamp	Collection Centre
Floppy disks	● Unsorted waste
Flowers and dried leaves (small quantities)	● Organic
Fluorescent lamps	Collection Centre
Fluorescent tubes	Collection Centre
Flyers (not plastic coated)	○ Paper and cardboard
Foam rubber	Collection Centre
Folders for documents in paper/cardboard	○ Paper and cardboard
Food film wrap without food residues	● Plastic packaging
Food slicer	Collection Centre
Food warmer	Collection Centre
Freezer bags	● Plastic packaging
Freezers	Collection Centre
French window (various sizes)	Collection Centre
Frozen food bags	● Plastic packaging
Fruit and vegetable netting	● Plastic packaging
Fruits and vegetables	● Organic
Fryer	Collection Centre
Furniture	Collection Centre
Futon	Collection Centre
Garden gazebo	Collection Centre
Garden swing	Collection Centre
Garments if in good condition	Container in the Collection Centre
Gas cooker	Collection Centre
Gas ovens	Collection Centre
Gas Stove	Collection Centre
Gas water heater	Collection Centre
Glass bottles	● Glass and cans
Glass bottles for cleaning products and personal hygiene	● Glass and cans
Glass bottles for medicines (empty and rinsed)	● Glass and cans
Glass carafes	● Glass and cans
Glass containers for liquid personal hygiene products	● Glass and cans
Glass containers for yoghurt /desserts	● Glass and cans

## G

H	Glass jars	● Glass and cans	
	Glass jars for foodstuffs	● Glass and cans	
	Glass sheets	Collection Centre	
	Glasses	● Glass and cans	
	Glossy drawing paper	● Unsorted waste	
	Glues	● Unsorted waste	
	Grain	● Organic	
	Grass	Collection Centre	
	Grass cuttings from meadows	Collection Centre	
	Grater in mixed materials	● Unsorted waste	
	Greasy kitchen towels	● Organic	
	Greasy paper napkins	● Organic	
	Hair	● Unsorted waste	
	Hair dryers	Collection Centre	
	Hard plastic plates	● Unsorted waste	
	Hardware	Collection Centre	
	Hats if in good condition	Container in the Collection Centre	
	Hessian bags	Collection Centre	
	Hi-fi	Collection Centre	
	Hi-fi recorder	Collection Centre	
Hobs	Collection Centre		
Hosepipes for irrigation	Collection Centre		
House plants any type	Collection Centre		
Household appliances	Collection Centre		
I	Ice cream containers	● Plastic packaging	
	Ice cream maker	Collection Centre	
	Ice cream tubs (polystyrene)	● Plastic packaging	
	Incense	● Organic	
	Inflatables	Collection Centre	
	Inner tubes	● Unsorted waste	
	Insecticides	Collection Centre	
	Insecticides (spray cans)	Collection Centre	
	Insulators	Collection Centre	
	Ipod	Collection Centre	
	Iron	Collection Centre	
	Iron doors	Collection Centre	
	Iron shelves	Collection Centre	
	Iron structures	Collection Centre	
	Ironing board	Collection Centre	
	J	Jackets if in good condition	Container in the Collection Centre
		Jars and other glass packaging	● Glass and cans
		Jeans if in good condition	Container in the Collection Centre
		Jewellery	● Unsorted waste

K	Keyboard	Collection Centre	
	Keys	● Glass and cans	
	Kitchen robot	Collection Centre	
	Kitchen sink	Collection Centre	
L	Kitchen tops	Collection Centre	
	Ladder (various sizes)	Collection Centre	
	Laundry basket	Collection Centre	
	Leather	● Unsorted waste	
	Lighters	● Unsorted waste	
	Lighting fixtures	Collection Centre	
	Lipstick	● Unsorted waste	
	Low consumption, Tabletop, neon lamps	Collection Centre	
	M	Magazine rack	Collection Centre
		Magazines (not plastic coated)	○ Paper and cardboard
		Magazines (without adhesive, metal or plastic parts)	○ Paper and cardboard
Manikin		Collection Centre	
Massage couch		Collection Centre	
Mastics		Collection Centre	
Mattresses		Collection Centre	
Mechanical personal weighing scales		Collection Centre	
Mercury (thermometers)		Collection Centre	
Metal cans		● Glass and cans	
Metal gift boxes		Collection Centre	
Metal grater		Collection Centre	
Metal hangers		Collection Centre	
Metal lids		Collection Centre	
Metal lids for jars		● Glass and cans	
Metal pans		Collection Centre	
Metal percolators		● Glass and cans	
Metal plugs		● Glass and cans	
Metal pot lids		Collection Centre	
Metal straps		Collection Centre	
Metal tins for animal food		● Glass and cans	
Metal tins for food		● Glass and cans	
Metallic lids for glass jars		● Glass and cans	
Microwave ovens		Collection Centre	
Milk cartons		○ Paper and cardboard	
Mincer		Collection Centre	
Mirror (various sizes)		Collection Centre	
Mobile Phone	Collection Centre		

Modem	Collection Centre
Monitor	Collection Centre
Mosquito nets	Collection Centre
Motorcycle helmet	Collection Centre
Motorcycle pannier	Collection Centre
Mouse	Collection Centre
Mozzarella bag	● Plastic packaging
Mozzarella packages	● Plastic packaging
MP3 player	Collection Centre
Multi-purpose Robot	Collection Centre
Nail polish	● Unsorted waste
Nappies/incontinence pads	● Unsorted waste
Neon bulbs	Collection Centre
Neon tubes	Collection Centre
Newspapers	○ Paper and cardboard
Newspapers and magazines	○ Paper and cardboard
Non-compostable coffee capsules	● Unsorted waste
Non-plastic hazardous household waste containers	Collection Centre
Non-plasticized flyers	○ Paper and cardboard
Non-plasticized notebooks	○ Paper and cardboard
Non-stick pans	Collection Centre
Nylon	● Unsorted waste
Nylon stockings	● Unsorted waste
Objects in crystal	Collection Centre
Office binder files without rings	○ Paper and cardboard
Office chair	Collection Centre
Opal glass (perfume flasks)	● Unsorted waste
Outdoor blinds	Collection Centre
Packaging cardboard	○ Paper and cardboard
Packaging films	● Unsorted waste
Packaging films including bubblewrap	● Plastic packaging
Packaging for household appliances in plastic or polystyrene (small)	● Plastic packaging
Packaging paper	○ Paper and cardboard
Packaging tape	● Unsorted waste
Padlocks	Collection Centre
Painted wood	Collection Centre
Paints	Collection Centre
Pallets	Collection Centre
Pamphlets	○ Paper and cardboard
Paper	○ Paper and cardboard

Paper and /or cardboard agendas	<input type="radio"/> Paper and cardboard
Paper and Cardboard packaging	<input type="radio"/> Paper and cardboard
Paper bags	<input type="radio"/> Paper and cardboard
Paper containers for eggs	<input type="radio"/> Paper and cardboard
Paper shopping bags	<input type="radio"/> Paper and cardboard
Paper sweet wrappers	<input type="radio"/> Paper and cardboard
Paper tickets (no receipts)	<input type="radio"/> Paper and cardboard
Paper with traces of detergents or other substances	<input checked="" type="radio"/> Unsorted waste
Parchment	<input type="radio"/> Paper and cardboard
Pencils	<input checked="" type="radio"/> Unsorted waste
Personal computer	Collection Centre
Pesticides	Collection Centre
Pet litter	<input checked="" type="radio"/> Unsorted waste
Pets' organic waste	<input checked="" type="radio"/> Unsorted waste
Photocopier	Collection Centre
Photographic film	<input checked="" type="radio"/> Unsorted waste
Photographs and photographic films	<input checked="" type="radio"/> Unsorted waste
Picture frames (various sizes)	Collection Centre
Plastic bags	<input checked="" type="radio"/> Plastic packaging
Plastic bottles for beverages	<input checked="" type="radio"/> Plastic packaging
Plastic bottles for cleaning products and personal hygiene	<input checked="" type="radio"/> Plastic packaging
Plastic bottles for cooking oil	<input checked="" type="radio"/> Plastic packaging
Plastic bottles for detergents and cleansers	<input checked="" type="radio"/> Plastic packaging
Plastic buckets	Collection Centre
Plastic chair	Collection Centre
Plastic chopping board	Collection Centre
Plastic coffee bags	<input checked="" type="radio"/> Plastic packaging
Plastic containers for detergents	<input checked="" type="radio"/> Plastic packaging
Plastic containers for hygiene products	<input checked="" type="radio"/> Plastic packaging
Plastic containers of liquid products	<input checked="" type="radio"/> Plastic packaging
Plastic crates	<input checked="" type="radio"/> Plastic packaging
Plastic cutlery	<input checked="" type="radio"/> Unsorted waste
Plastic egg containers	<input checked="" type="radio"/> Plastic packaging
Plastic floor mats	Collection Centre
Plastic flower pots provided with the product	<input checked="" type="radio"/> Plastic packaging
Plastic flowerpot holder	Collection Centre



Plastic hairbrushes	● Unsorted waste
Plastic hangers	● Plastic packaging
Plastic hazardous household waste containers (empty)	● Plastic packaging
Plastic hazardous household waste containers (with residues)	Collection Centre
Plastic lids	● Plastic packaging
Plastic packages for pasta	● Plastic packaging
Plastic packaging of snacks, etc.	● Plastic packaging
Plastic paint pots	Collection Centre
Plastic pasta bags	● Plastic packaging
Plastic plugs	● Plastic packaging
Plastic roll-on deodorant	● Plastic packaging
Plastic sandals	● Unsorted waste
Plastic shopping bags	● Plastic packaging
Plastic straws	● Unsorted waste
Plastic sweet wrappers	● Plastic packaging
Plastic toothpaste tube	● Plastic packaging
Plasticized paper bags	● Unsorted waste
Plasticized tickets for public transport	● Unsorted waste
Playpen	Collection Centre
Pocket umbrella	Collection Centre
Polaroid photo	● Unsorted waste
Polisher	Collection Centre
Polystyrene containers for food	● Plastic packaging
Polystyrene for packaging	● Plastic packaging
Polystyrene packaging (large sizes)	Collection Centre
Polystyrene trays	● Plastic packaging
Portable GPS	Collection Centre
Pots	Collection Centre
Pouf	Collection Centre
Printer	Collection Centre
Printer Cartridges	Collection Centre
Print-outs	○ Paper and cardboard
Promotional flyers	○ Paper and cardboard
Pruned branches in small quantities	Collection Centre
Public transport tickets	○ Paper and cardboard
Pushchairs	Collection Centre
Pyrex	Collection Centre
Pyroceram/ceramic pan	Collection Centre

R	Radiator cover	Collection Centre
	Radio	Collection Centre
	Rags	● Unsorted waste
	Railings	Collection Centre
	Rat poison	Collection Centre
	Razor blades	● Unsorted waste
	Receipts	● Unsorted waste
	Receipts on thermal paper	● Unsorted waste
	Refrigerators	Collection Centre
	Remote controls	Collection Centre
	Rocking chair	Collection Centre
	Rollaway Bed	Collection Centre
	Roller blind chest	Collection Centre
	Roller shutter (various sizes)	Collection Centre
	Roof rack	Collection Centre
	Rotten food	● Organic
	Rubber	● Unsorted waste
	Rubber gloves	● Unsorted waste
	Rubber hoses	Collection Centre
	Rubber objects	● Unsorted waste
	Rubber stamps	● Unsorted waste
	Rubble in small quantities from housework	Collection Centre
S	Safe	Collection Centre
	Salad	● Organic
	Sandpaper	● Unsorted waste
	Sanitary Towel	● Unsorted waste
	Sanitaryware	Collection Centre
	Sawdust dirty with detergents or other substances	● Unsorted waste
	Scanner	Collection Centre
	Scarves if in good condition	Container in the Collection Centre
	Scissors	Collection Centre
	Scratching posts	Collection Centre
	Sewing machine	Collection Centre
	Shaving brushes	● Unsorted waste
	Sheet glass	Collection Centre
	Shelf	Collection Centre
	Shelves (various sizes)	Collection Centre
	Shirts and sweaters if in good condition	Container in the Collection Centre
	Shirts if in good condition	Container in the Collection Centre
	Shoe dyes	● Unsorted waste

Shoe polish tubes	● Unsorted waste
Shoe rack	Collection Centre
Shoes if in good condition	Container in the Collection Centre
Shower Cubicle	Collection Centre
Shutters	Collection Centre
Sideboard	Collection Centre
Single/Double Bed	Collection Centre
Sink	Collection Centre
Skates	Collection Centre
Ski boots if in good condition	Container in the Collection Centre
Skirting	Collection Centre
Skis and snowshoes	Collection Centre
Slats	Collection Centre
Small household appliances	Collection Centre
Small steel pans	Collection Centre
Snowboard	Collection Centre
Soap	● Unsorted waste
Socks (sponge, wool, cotton) if in good condition	Container in the Collection Centre
Sofa bed	Collection Centre
Sofas	Collection Centre
Soft furnishings	Collection Centre
Soft toys and other padded objects	● Unsorted waste
Solvents	Collection Centre
Soot	● Organic
Speakers	Collection Centre
Sponge	● Unsorted waste
Spray cans labelled for hazardous materials	Collection Centre
Spray cans with ecological propellant	● Glass and cans
Spray cans with flammable gas	Collection Centre
Spray paint cans	Collection Centre
Stain removers	Collection Centre
Stationery (pencils, ball point pens, rulers etc.)	● Unsorted waste
Steel cans for foodstuffs	● Glass and cans
Steel cutlery	Collection Centre
Step	Collection Centre
Stereo	Collection Centre
Stereo speakers	Collection Centre
Sticking plasters	● Unsorted waste
Stirella	Collection Centre
Stones of fruit	● Organic

# T

Stool	Collection Centre
Storage batteries	Collection Centre
Stroller	Collection Centre
Suction hood	Collection Centre
Suitcase	Collection Centre
Sun blind (various sizes)	Collection Centre
Synthetic ice	● Unsorted waste
Syringes protected with cap	● Unsorted waste
Table (various sizes)	Collection Centre
Tandem	Collection Centre
Tanning lamp	Collection Centre
Taps	Collection Centre
Tea bags	● Organic
Telephone	Collection Centre
Television (various sizes)	Collection Centre
Television sets	Collection Centre
Tetrapak	○ Paper and cardboard
Tetrapak for beverages	○ Paper and cardboard
Thermal Paper	● Unsorted waste
Thermometers	Collection Centre
Ties if in good condition	Container in the Collection Centre
Tiles (small amounts)	Collection Centre
Tiles in small quantities from housework	Collection Centre
Tin baking tray	Collection Centre
Tinfoil	● Glass and cans
Tinplate food containers	● Glass and cans
Tins	● Glass and cans
Toaster	Collection Centre
Toner	Collection Centre
Toner Cartridges	Collection Centre
Toothbrush	Collection Centre
Toothpaste tube	● Plastic packaging
Toothpicks	● Organic
Towel rail	Collection Centre
Towels if in good condition	Container in the Collection Centre
Toys (non-electronic, small size)	● Unsorted waste
Transformers	Collection Centre
Treadmill	Collection Centre
Trichloroethylene	Collection Centre
Trolleys	Collection Centre
Tuna tins	● Glass and cans
Turpentine	Collection Centre

	Tyres	Collection Centre
	Tyres without rim	Collection Centre
U	Umbrella	Collection Centre
	Upholstery	Collection Centre
	Used matches	● Organic
	Used mineral oils	Collection Centre
	Used paper tissues	● Organic
	Used vacuum cleaner bags	● Unsorted waste
	Used vegetable oils (cooking oil)	Collection Centre
V	Vacuum cleaner	Collection Centre
	Vacuum cleaner filters	● Unsorted waste
	Valet stand	Collection Centre
	VCR	Collection Centre
	Vegetables	● Organic
	Venetian blinds (various sizes)	Collection Centre
	Vials (not intended for drugs)	● Glass and cans
	Vials for injections	● Unsorted waste
	Vibrating platform	Collection Centre
	Video camera	Collection Centre
	Video tapes and their plastic cases	● Unsorted waste
	Vinyl discs	● Unsorted waste
	Voluminous furnishing objects	Collection Centre
	W	Wadding
Wall units		Collection Centre
Wardrobe door		Collection Centre
Wardrobes		Collection Centre
Washing machine		Collection Centre
Water jug filter		● Unsorted waste
Wax candles		● Unsorted waste
Wax paper for food		● Unsorted waste
WC		Collection Centre
Weedkillers		Collection Centre
Wellington boots if in good condition		Container in the Collection Centre
Wheel rims		Collection Centre
Wheelchair		Collection Centre
Whisk		Collection Centre
Wicker		Collection Centre
Wicker basket		Collection Centre
Window frame/ French window		Collection Centre
Windscreen wipers		Collection Centre
Wired glass		Collection Centre

Wood from pruning	Collection Centre
Wood wax polish	● Unsorted waste
Wooden chair	Collection Centre
Wooden crates	Collection Centre
Wooden cutting boards	Collection Centre
Wooden doors	Collection Centre
Wooden frames	Collection Centre
Wooden ice-cream sticks	● Organic
Wooden planks	Collection Centre
Wooden shelves	Collection Centre
Wooden window frames	Collection Centre
Wooden, plastic, aluminium, iron planks	Collection Centre
Woodworm killer	Collection Centre
Writing desk	Collection Centre
X-rays (in small quantities)	● Unsorted waste
Yoghurt containers	● Plastic packaging
Yoghurt jars	● Plastic packaging
Yoghurt pot foil lids	● Glass and cans

X  
Y

On the site [www.apricaspa.it](http://www.apricaspa.it) you can find all the information you need on the Sorted Waste Collection System.

By going to this website, you can access the following features:

- neighbourhood services
- where to put it?



Only if we sort properly  
can we give a new life to waste.  
Did you know that...



...with 37 cans you can  
make a moka pot



...from 7 glass jars  
you get a new  
glass bottle

...with kitchen scraps you get a soil  
which can be used for  
cultivating plants and flowers



...with 5 plastic  
bottles you can make  
a watering can

This guide contains  
useful information on  
**handling and  
delivering waste  
properly**

**in case of doubts  
and for more informations:**



**for updates go to the website  
[www.apricaspa.it](http://www.apricaspa.it)**

December 2018

**Aprica SpA**

Registered office  
Via Lamarmora, 230  
25124 Brescia

**Operational Headquarters**

Via Moroni, 337  
24127 Bergamo

follow us on

